

# Brain setup for Futaba FG8Super+R6208SB+MSH Brain+MSH Protos500 By SJo1 10<sup>th</sup> Aug 2012

Disclaimer!

This is how I made it, I don't take any responsibility of damage that this setup procedure might have cause!

Note! Connect servo leads so that signal wire is up!

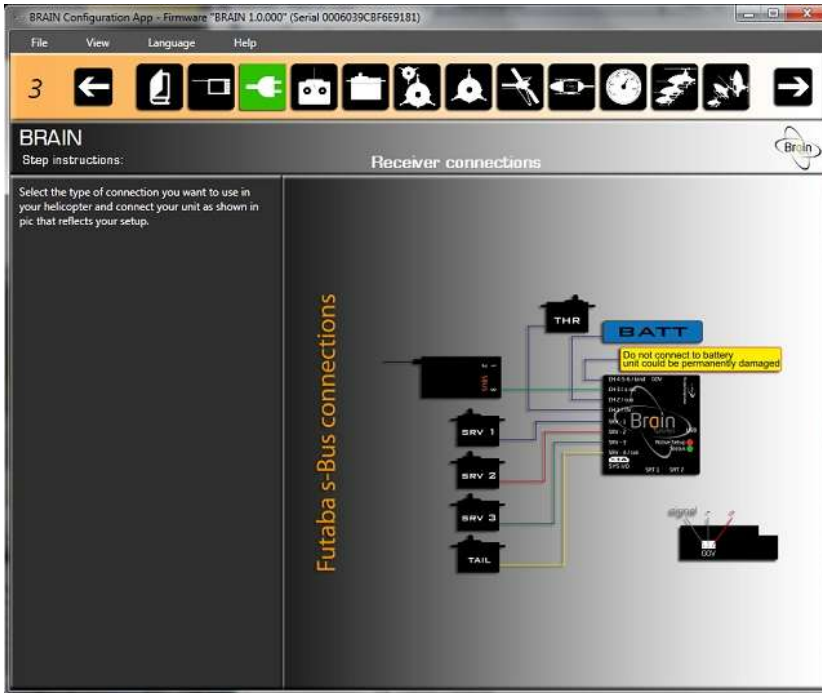
1. Install Brain application.
2. Connect Brain to PC, General Instructions



3. On page 2 select sbus receiver



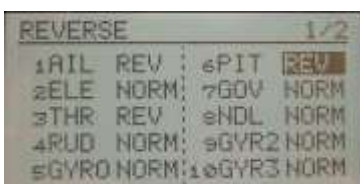
4. On page 3 make correct connections as per picture in Brain app.



5. On page 4 make ch reverse so bars moves in correct directions



- Reverse AIL, THR & PIT channels



- Change endpoints from radio
- AIL+ELE 135/135 to get 100/100 in app
- THR 130/129 to get 0/100 in app
- RUD both limit & travel to 138/138 to get 100/100 in app

END POINT		1/3	
	←←←	→→→	
1 AIL	135	135	135 135
2 ELE	135	135	135 135
3 THR	135	130	129 135
4 RUD	138	138	138 138

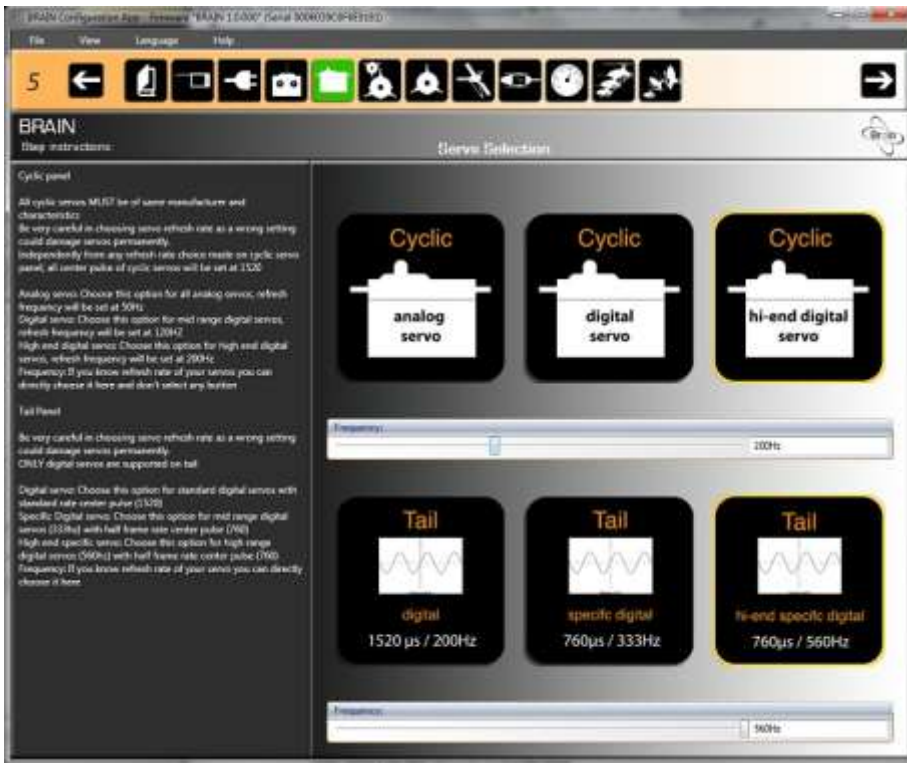
- PIT 130/130 to get 100/100 in app

END POINT		2/3	
	←←←	→→→	
5 GYRO	135	100	100 135
6 PIT	135	130	130 135
7 GOV	135	100	100 135
8 NDL	135	100	100 135

- Gyro gain in Gyro menu on FG8 GY RUD AVCS 33% seems to be 30% in Brain app.

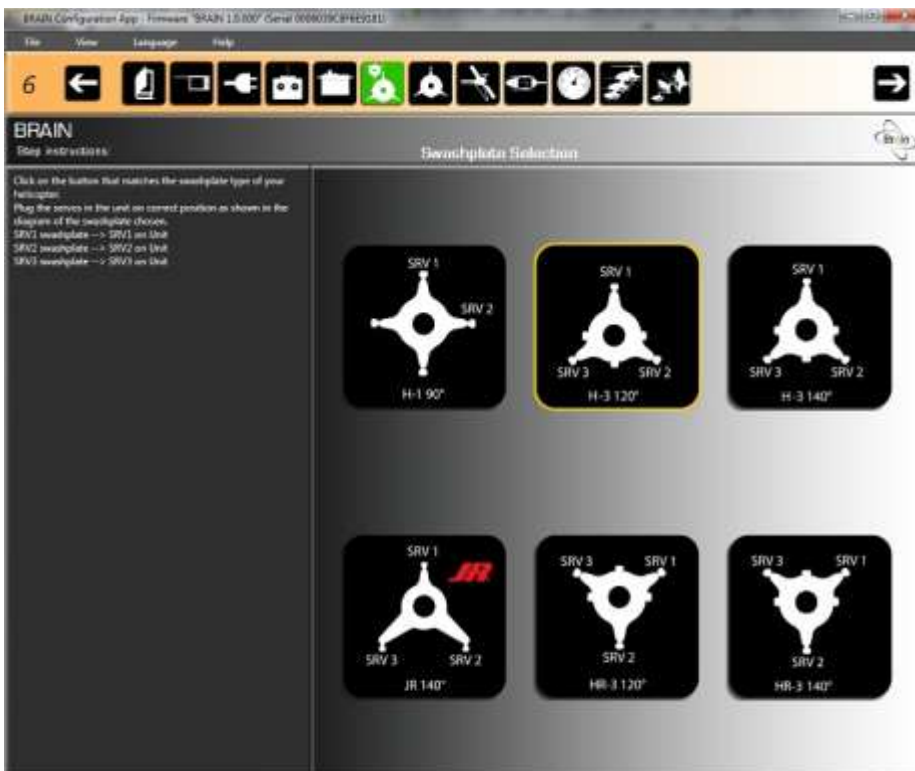
GYRO		Normal	
EDIT NORMAL			
GY1 RUD AVCS	33%	<	33%>
GY2 AIL AVCS	50%	<	50%>
GY3 ELE AVCS	50%	<	50%>

6. On page5 select Cyclic servos as highend digital 1520/200 and for tail highend spec digital 760/560



7. On page6 select Protos swashplate H-3 120

SRV1 front, SRV2 rear right, SRV3 rear left



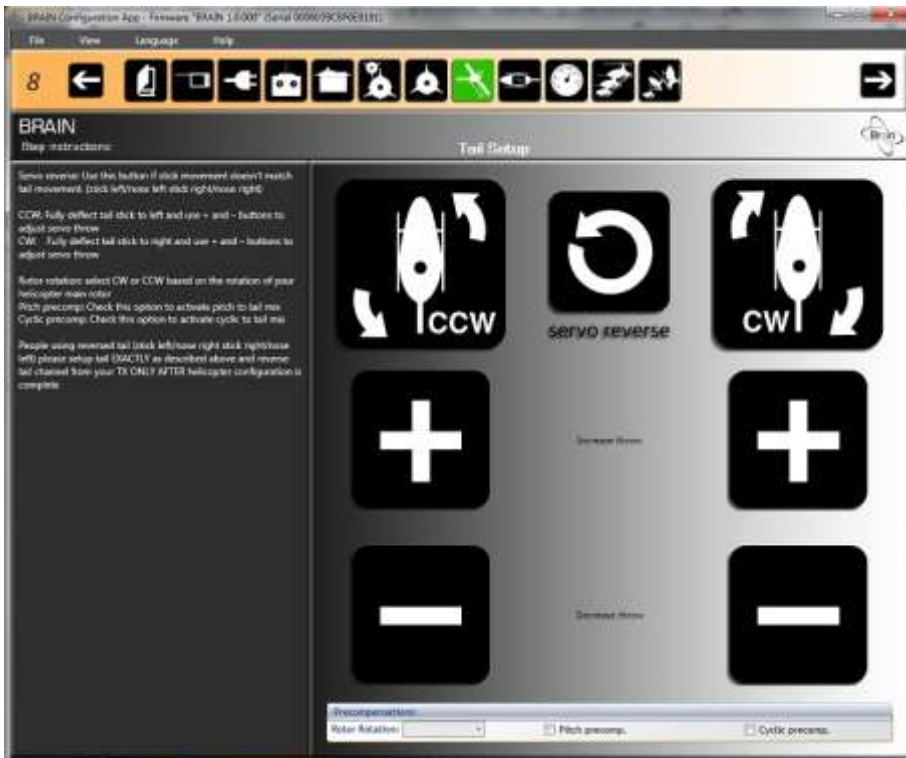
8. On page7 Swashplate setup, follow instructions.

- Setup mechanics according the instructions.



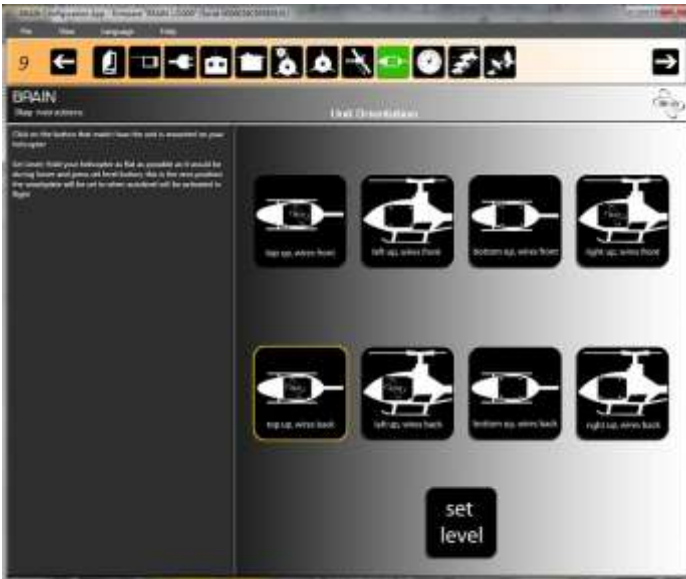
9. On page 8 Tail setup, follow instructions.

- Setup mechanics according the instructions.



10. On page 9 Unit Orientation, choose position how You have unit in heli.

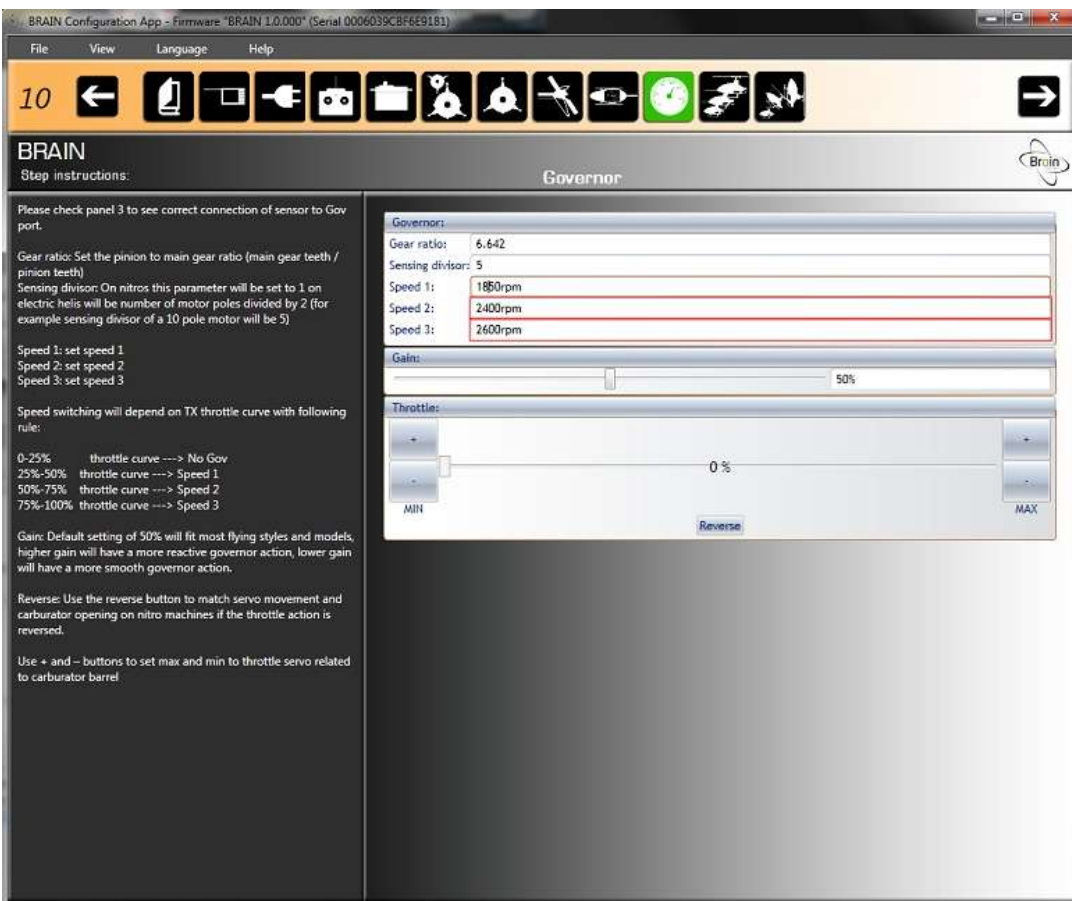
Set CG properly so it hangs in level or so that head is removed and heli stands on it main mast:)



11. On page 10 Governor, main pulley have 93T / 14T and ratio is then 6,642

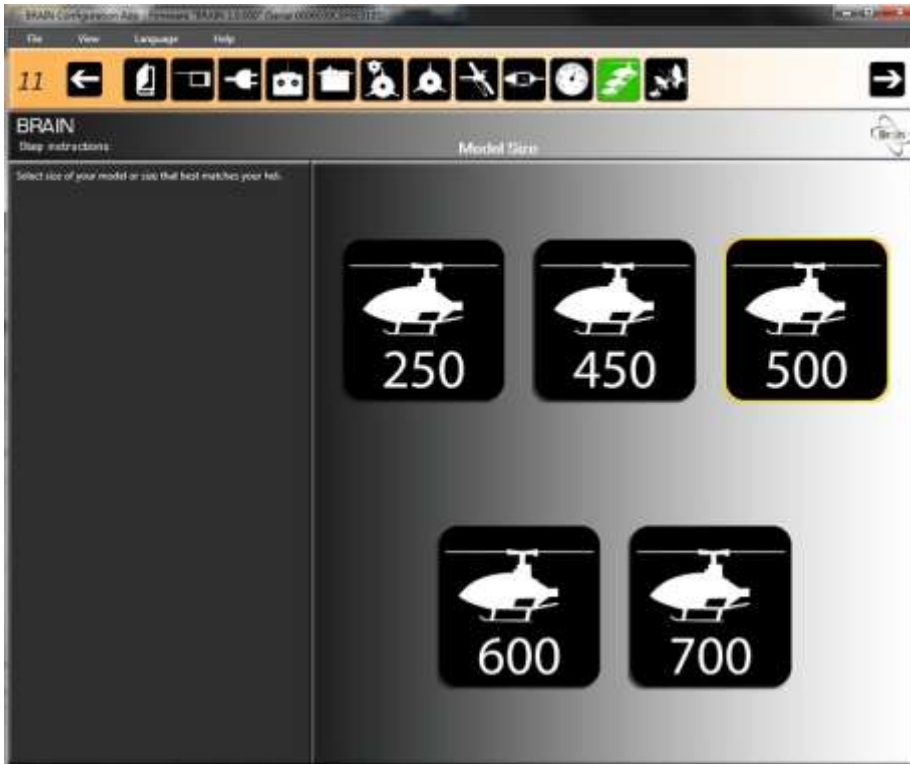
MSH-51063-880Kv Scorpion motor is used and it have 12N 10P, so divisor is 5

Set headspeeds as You wish, Stretch kit max HS is 2700rpm I set it to 2600rpm

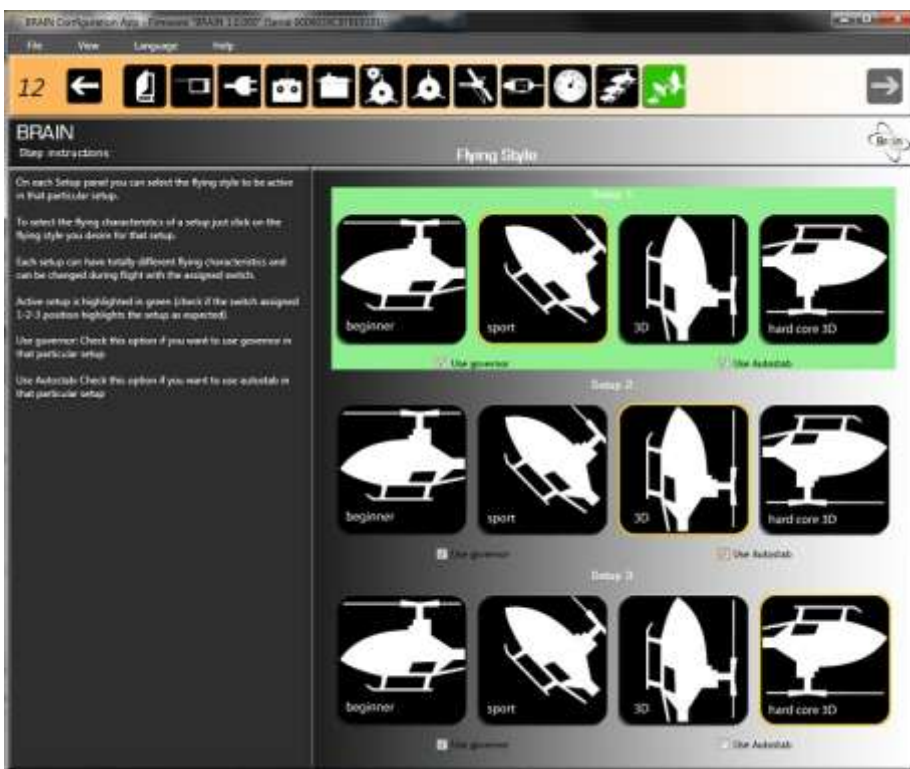




12. On page 11 Model Size, 500 here for Protos 500



13. On page 12 Flying style, is up to user what to choose.



14. Save setup from top left File - Save setup.